

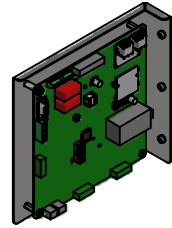
HGP Part Number	HorsePower (HP)	kVar	Harmonic	Voltage (V)	Hz.	Phase
HGP0015BW3----	15	3.8	5th	240	60	3

Note: For Torque Information  
See IOM Manual

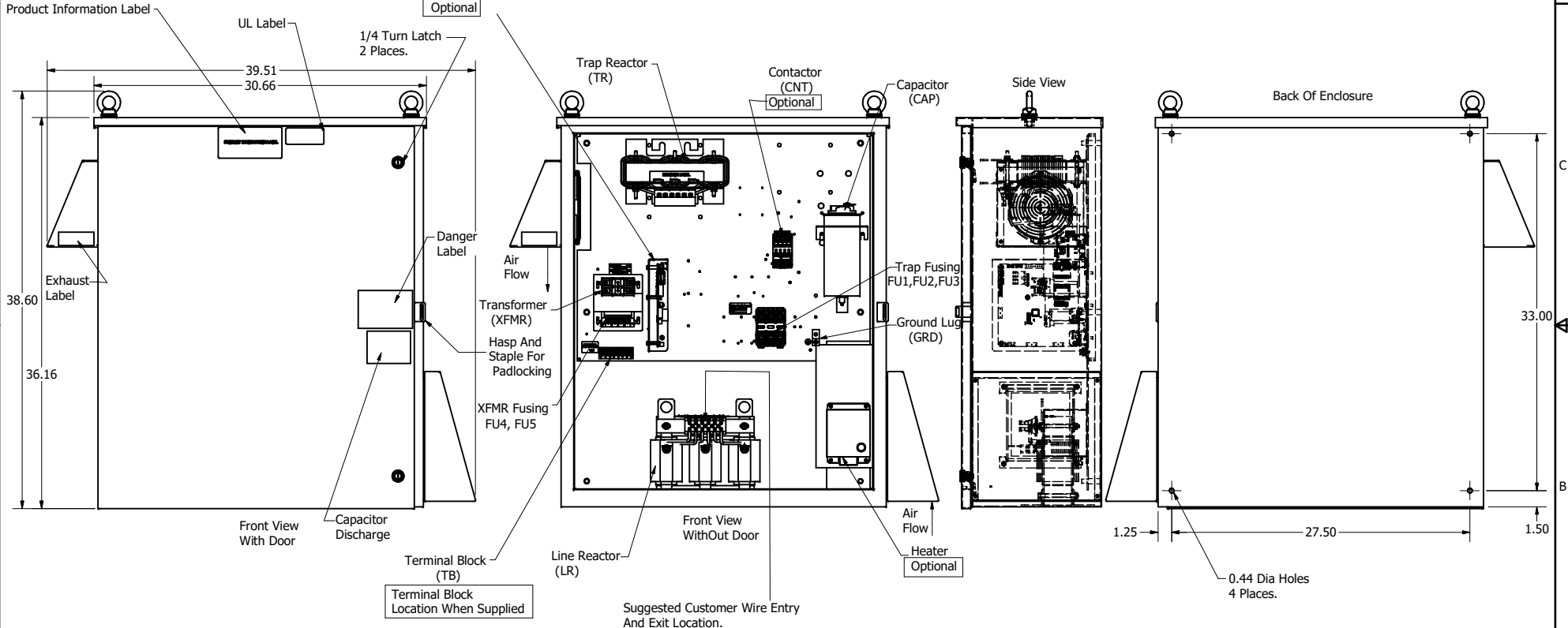
Customer Connections.  
L1, T1, L2, T2, L3, T3  
Wire Range: 1 AWG to 22 AWG.

Ground Lug  
Wire Range: 1/0 to 14 AWG.

HGP Part Number	Schematic Drawing #	Approx Weight (LBS)
HGP0015BW3S0000	30209-1S	229
HGP0015BW3C0000	30209-1	231
HGP0015BW3C000H	30209-1H	235
HGP0015BW3C1000	30209-PQ	234
HGP0015BAW3C100H	30209-PQH	238



PQConnect Board  
Optional



HGP0015BW3----					
Components	S0000	C0000	C000H	C1000	C100H
Line Reactor (LR)	x	x	x	x	x
Trap Reactor (TR)	x	x	x	x	x
Capacitor (Cap)	x	x	x	x	x
Trap Fusing, FU1, FU2, FU3	x	x	x	x	x
Contactor (CNT)		x	x	x	x
Transformer (XFMR)	x	x	x	x	x
XFMR Fusing, FU4, FU5	x	x	x	x	x
Heater			x		x
PQConnect Board				x	x

NOTE: USE ONLY HUBS OR FITTINGS THAT COMPLY  
WITH UL514B FOR TYPE 3R ENCLOSURES

Customer Is Responsible For Installation to  
Meet All National And Local Electrical Codes.

Material(s) Shall be RoHS Compliant

THE INFORMATION AND DESIGNS CONTAINED IN THIS DRAWING ARE CONFIDENTIAL AND THE PROPRIETARY PROPERTY OF ALLIED MOTION TECHNOLOGIES INC. AND ITS SUBSIDIARIES. NEITHER THIS DESIGN NOR ANY INFORMATION CONTAINED IN THIS DRAWING MAY BE REPRODUCED OR DISCLOSED TO OTHERS WITHOUT THE EXPRESS WRITTEN CONSENT OF ALLIED MOTION TECHNOLOGIES INC. AND ITS SUBSIDIARIES.	B	\$265, Enclosure Updated	8/6/2020	DSW	DECIMAL	.XX ± .25 .XXX ± .10	<p>W182N10611 (Rev. 13) Feb 2023 Germantown, WI 53022 © 2023 TCI, LLC An <b>allied motion</b> Company Harmonic Guard Passive HGP, 15HP, 240/3/60, Type 3R</p>
	A	AS DESIGNED	2/15/16	BWM	FRACTIONAL	± 1/32	
	NO	REVISION	DATE	BY	ANGULAR	± 1°	
OWN BY: BWM DATE: 2/15/16 SCALE: 1/8 DRAWN: HGP DATE: 2/15/16 TCI						106434DG	
						SHT 1 OF 1	